



PRODUCT INFORMATION

PART #	BH-161D	Revision: 1-2012
	6 "D" Batteries Holder	
ISO 9001		

SPECIFICATIONS

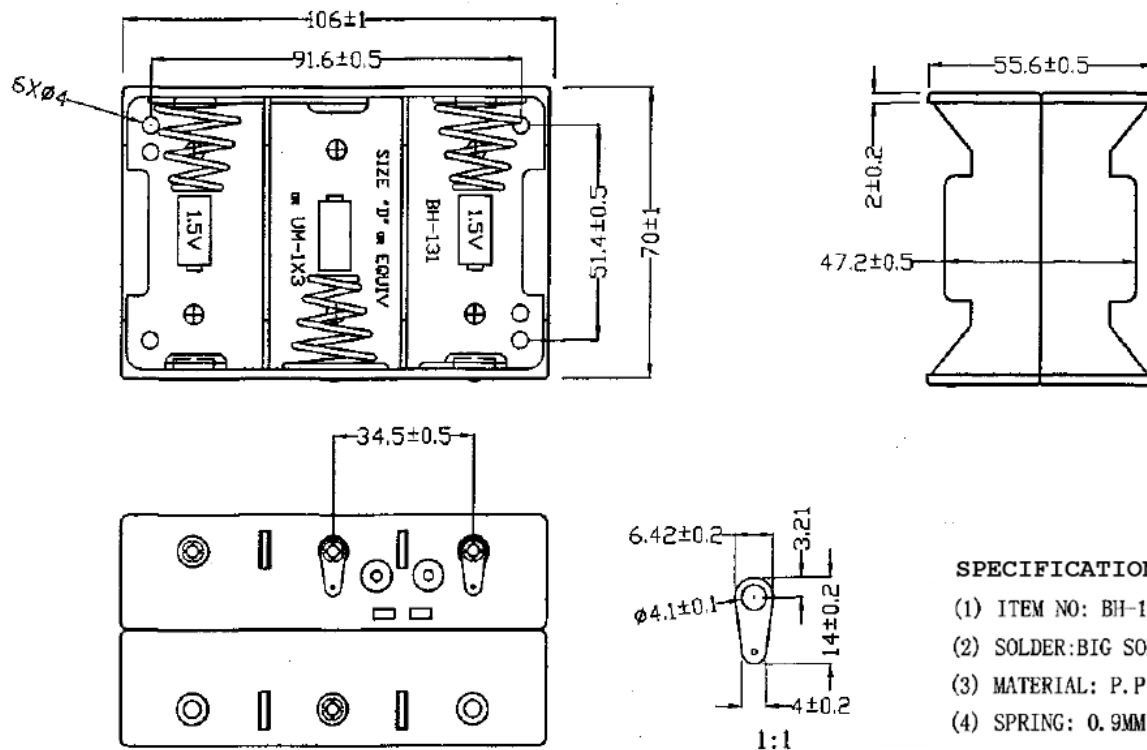
Battery (Cell) Type	D	Number of Cells	6			
Cell Configuration	Series Connection	Output Power	9 Vdc			
Operating Temperature	-20°C to + 65°C	Storage Temperature	-30°C to +85°C			
Material	Case	P.P. Resin (black)	Washer			
	Contact	0.9 mm 65C Spring Wire				
	Termination	Solder Tab				
Physical Dimensions	Length (L)	106	Width (W)	70.0	Height (H)	55.6
Approximate Weight			Compliance	RoHS		
Options						

RELIABILITY

Insulation Test	A minimum of 10 MΩ, measured with 100 Vdc Insulation Resistance Meter, between the Electrical Terminals and the Case
Vibration Test	2 Hours of at 1.5 mm with 10 to 55 Hz. vibration frequency to each of 3 perpendicular directions
Termination Strength	Maximum of 9.8 N (1.0 Kg) load pull test, applied to each terminal in axial direction for 10 seconds
Drop Test	Dropped naturally from 750 mm height onto the surface of 40 mm wooden board, 3 axes (X,Y,Z) directions, 3 times (6 times total)
Warranty	For a period of one (1) year from date of shipping under normal operations conditions

DIMENSIONS

Dimensions in mm; Tolerance ±0.5 mm



SPECIFICATION

- (1) ITEM NO: BH-161D₆
- (2) SOLDER: BIG SOLDER
- (3) MATERIAL: P.P RESIN BLACK COLOR
- (4) SPRING: 0.9MM 65C SPRING WIRE