

CI45PE-15290-C1

Rev. 0-2019
RoHS3 & REACH & IP68 & 300 HR ASTM B117
Piezoelectric Indicators



Operating Characteristics

ELECTRICAL

Rated Voltage	12 VDC
Operating Voltage	5 to 15 VDC
Max Current at Vmax	35 mA

ACOUSTIC

Tone Category	Continuous
Description	Steady
Center <i>f</i>	2900 ± 250 Hz
Min SPL at Vrated	98 dB
Test Conditions	61 cm



Physical Characteristics

MATERIALS

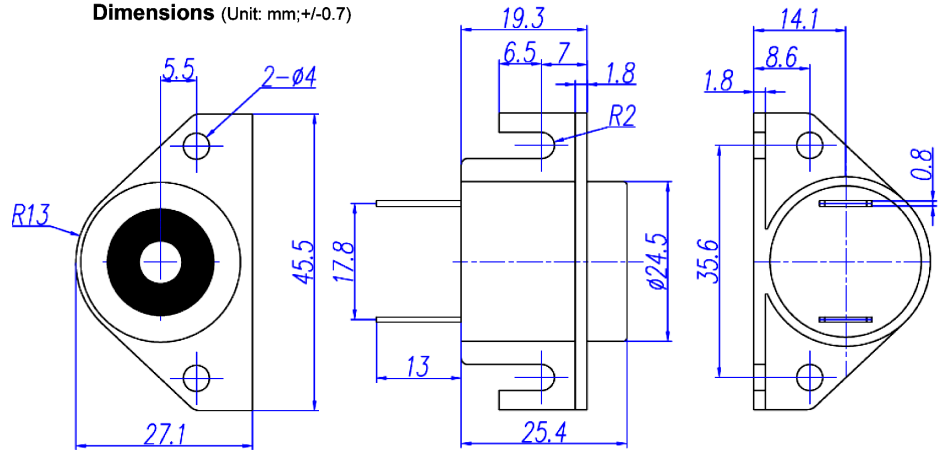
Housing	Noryl
Contact	Brass, Electro-tin Plated

TEMPERATURE RANGES

Operating	-40 to +105 °C
Storage	-40 to +105 °C

Weight	17.2 g
Termination	Terminal

Dimensions (Unit: mm; +/-0.7)



Revision	Description	By	Date
0-2019	Initial Specification Sheet	JL	2019-01-31

Warranty: For a period of one (1) year from date of shipping under normal operations conditions This warranty does not apply to products damaged through misuse, abuse, improper installation, alteration, rework, or attempt to repair.