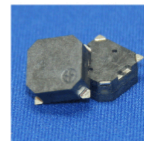


CI08E-05S270-C-1

Rev. 3-2026
RoHS3 & REACH
Electromagnetic Indicators


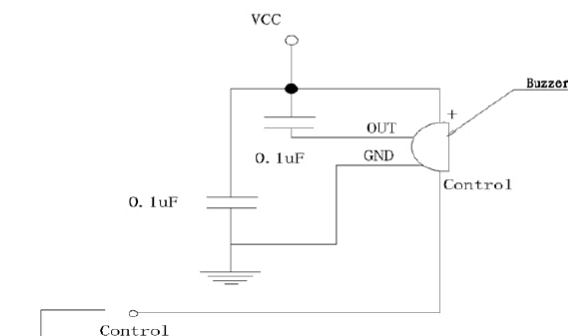
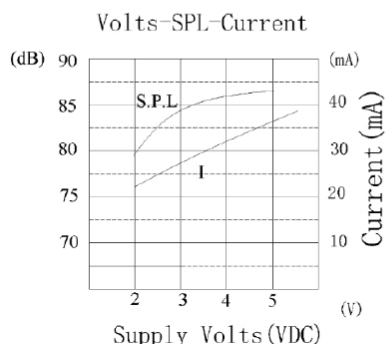
Operating Characteristics

ELECTRICAL

Rated Voltage	3 VDC
Operating Voltage	2 to 5 VDC
Max Current at Rated	40 mA

ACOUSTIC

Tone Category	Continuous/Pulsating
Description	User Defined
Center f	$2,700 \pm 100$ Hz
Pulse f	≤ 10 Hz
Min SPL at Rated	82 dB
SPL Test Conditions	10 cm



Recommended Drive Circuit

Physical Characteristics

MATERIALS

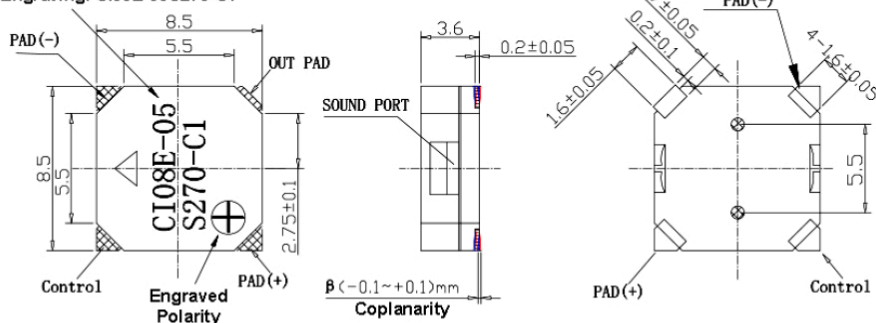
Housing	LCP
Diaphragm	Ni-Alloy
Solder Pads	Brass

TEMPERATURE RANGES

Operating	-40 to +85 °C
Storage	-40 to +85 °C

Weight 0.8 g

Laser Engraving: CI08E-05S270-C1



CH (Control) Pulled High for Continuous Output and Low for No Output
Pulse CH for Pulsating Tone

Pad	Function	Input
Pad (+)	Input Power	VDD
Pad (-)	Ground	GND
Control	Control	CH
Out Pad	N/A	VDD + Capacitor

General tolerance = ± 0.3 mm and all measurements in mm unless otherwise noted.

Revision	Description	By	Date
2-2023	Added part image.	SK	2023-05-05
3-2026	Added the Pulse Frequency. Updated the diaphragm material from Iron to Ni-Alloy. Updated the Tone Category from Continuous to Continuous/Pulsating and changed the description from Steady to User Defined. Updated the Reflow Profile. Updated the mechanical to include continuous and pulsating instructions and added pad information table.	KG	2026-01-20

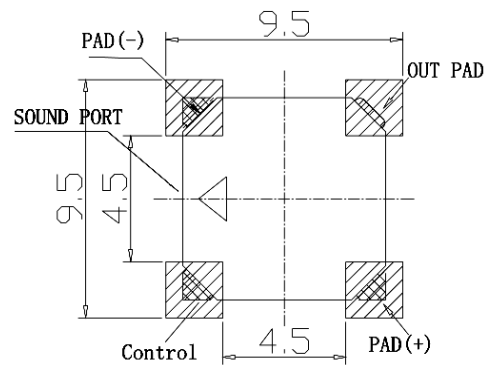
Warranty: For a period of one (1) year from date of shipping under normal operations conditions. This warranty does not apply to products damaged through misuse, abuse, improper installation, alteration, rework, or attempt to repair.

The information contained herein is believed to be correct, but no guarantee or warranty, express or implied, with respect to accuracy, completeness or results is extended and no liability is assumed. Challenge Electronics reserves the right to make changes in any specification, data or material contained herein.

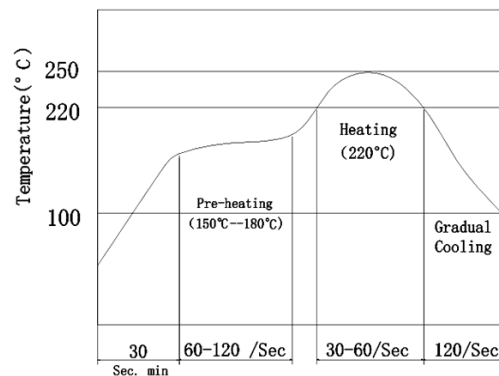
CI08E-05S270-C-1

Rev. 3-2026
RoHS3 & REACH
Electromagnetic Indicators

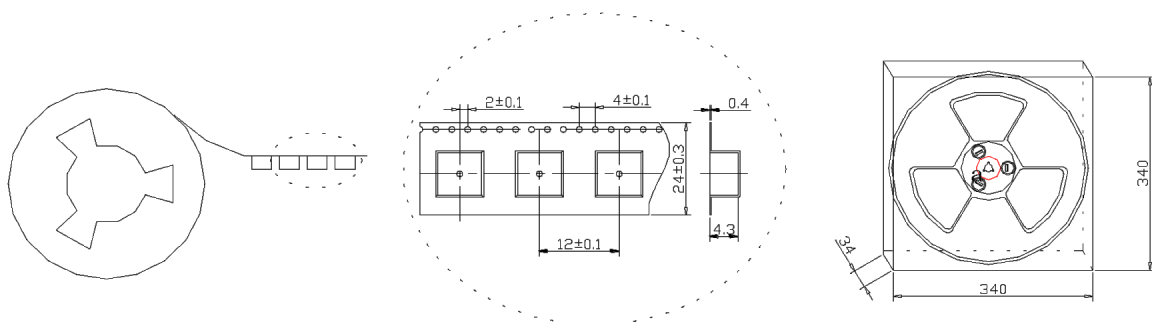

Recommended Footprint



Recommended Reflow Profile



Tape & Reel Packaging



1000 pieces per reel, 5 reels per container, 5000 pieces total

Revision	Description	By	Date
2-2023	Added part image.	SK	2023-05-05
3-2026	Added the Pulse Frequency. Updated the diaphragm material from Iron to Ni-Alloy. Updated the Tone Category from Continuous to Continuous/Pulsating and changed the description from Steady to User Defined. Updated the Reflow Profile. Updated the mechanical to include continuous and pulsating instructions and added pad information table.	KG	2026-01-20

Warranty: For a period of one (1) year from date of shipping under normal operations conditions. This warranty does not apply to products damaged through misuse, abuse, improper installation, alteration, rework, or attempt to repair.

The information contained herein is believed to be correct, but no guarantee or warranty, express or implied, with respect to accuracy, completeness or results is extended and no liability is assumed. Challenge Electronics reserves the right to make changes in any specification, data or material contained herein.