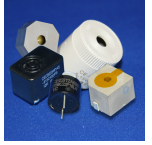


CI13E-03S240-C-1

Former P/N: CEEB128N100-103C24MLR

Rev. 1-2019
RoHS3 & REACH
Electromagnetic Indicators



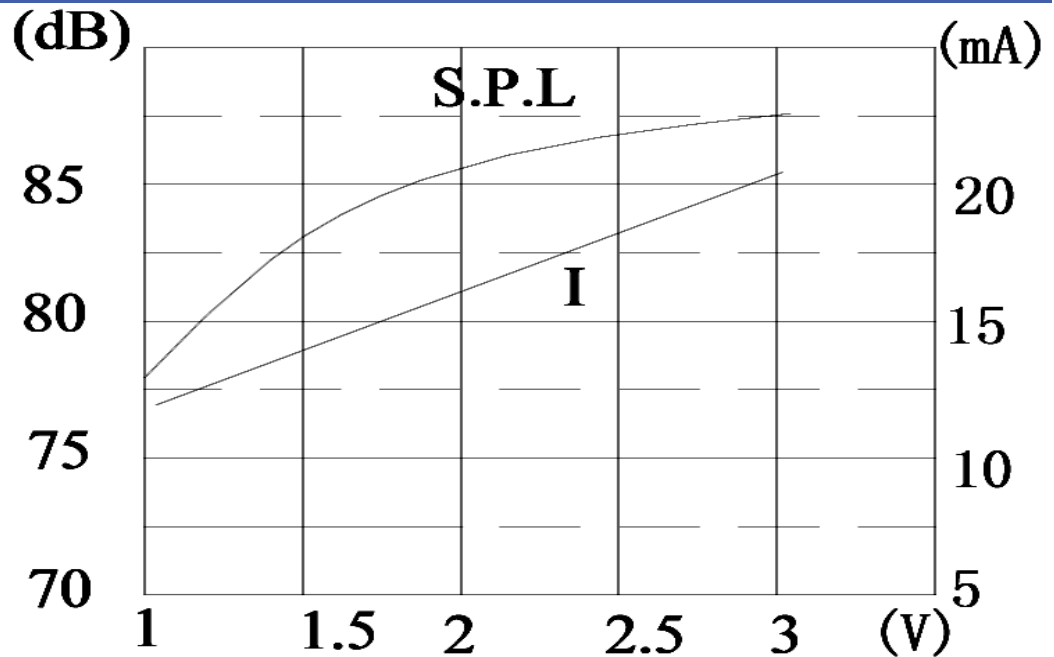
Operating Characteristics

ELECTRICAL

| | |
|---------------------|------------|
| Rated Voltage | 1.5 VDC |
| Operating Voltage | 1 to 3 VDC |
| Max Current at Vmax | 20 mA |

ACOUSTIC

| | |
|-------------------|-------------------|
| Tone Category | Continuous |
| Description | Steady |
| Center f | 2400 \pm 400 Hz |
| Min SPL at Vrated | 80 dB |
| Test Conditions | 10 cm |



Physical Characteristics

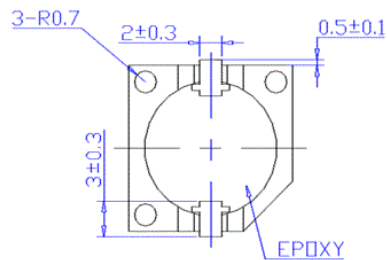
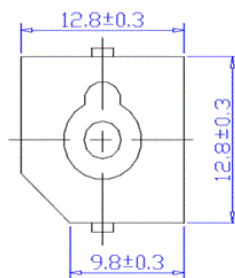
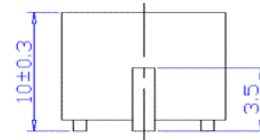
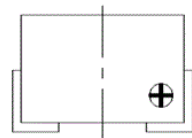
MATERIALS

| | |
|------------|-----------------|
| Housing | PPS |
| Diaphragm | Nickel |
| Solder Pad | Sn Plated Brass |

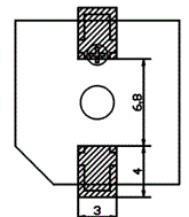
TEMPERATURE RANGES

| | |
|-----------|---------------|
| Operating | -30 to +70 °C |
| Storage | -40 to +85 °C |

Weight 2.8 g



RECOMMENDED LAND PATTERN



| Revision | Description | By | Date |
|----------|-----------------------------|----|------------|
| 0-2014 | Initial Specification Sheet | EZ | 2014-07-10 |
| 1-2019 | Migrate to new format | CF | 2019-06-25 |

Warranty: For a period of one (1) year from date of shipping under normal operations conditions This warranty does not apply to products damaged through misuse, abuse, improper installation, alteration, rework, or attempt to repair.

The information contained herein is believed to be correct, but no guarantee or warranty, express or implied, with respect to accuracy, completeness or results is extended and no liability is assumed. Challenge Electronics reserves the right to make changes in any specification, data or material contained herein.