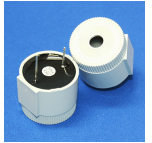


## CI25P-16T290-C-1X

Former P/N: CE-C80

Rev. 2-2023  
RoHS3 & REACH  
IP68  
Piezoelectric Indicators



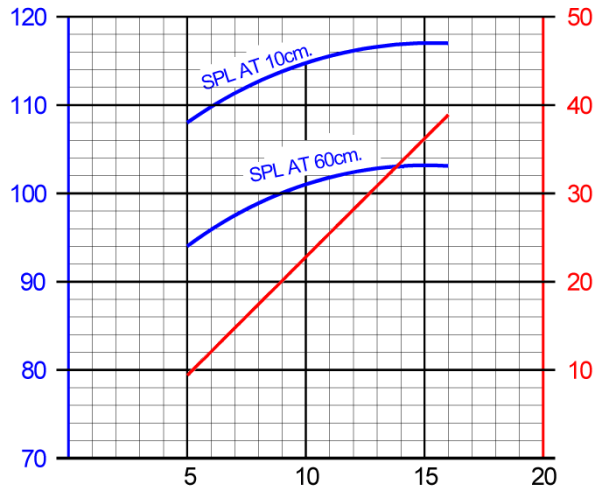
### Operating Characteristics

#### ELECTRICAL

Rated Voltage	12 VDC
Operating Voltage	5 to 16 VDC
Max Current at Vrated	40 mA

#### ACOUSTIC

Tone Category	Continuous
Description	Steady
Center $f$	2900 $\pm$ 250 Hz
Min SPL at Vrated	98 dB
Test Conditions	61 cm



### Physical Characteristics

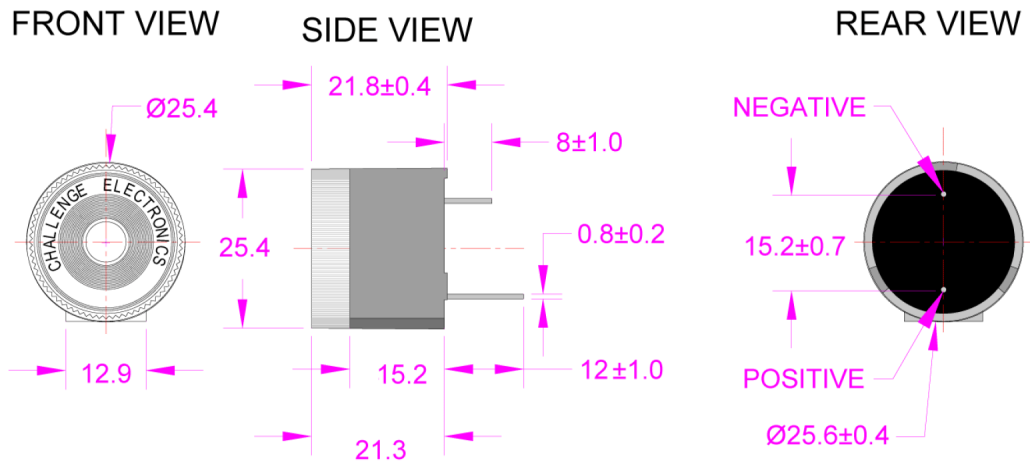
#### MATERIALS

Housing	Plastic
Diaphragm	Stainless Steel
Through-hole Pin	Tin Plated Brass

#### TEMPERATURE RANGES

Operating	-30 to +65 °C
Storage	-40 to +100 °C

Weight 11 g



General Tolerance:  $\pm 0.75$ mm

All measurements in mm unless otherwise noted.

Revision	Description	By	Date
1-2022	Updated mechanical drawing. Updated pin lengths from 7.6mm and 12.7mm to 8mm and 12mm.	CT	2022-03-01
2-2023	Added part image.	SK	2023-05-08

Warranty: For a period of one (1) year from date of shipping under normal operations conditions. This warranty does not apply to products damaged through misuse, abuse, improper installation, alteration, rework, or attempt to repair. IP Rating ensures functionality after water has been drained fully from device.

The information contained herein is believed to be correct, but no guarantee or warranty, express or implied, with respect to accuracy, completeness or results is extended and no liability is assumed. Challenge Electronics reserves the right to make changes in any specification, data or material contained herein.