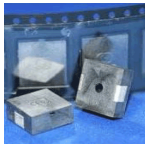


INDICATORS • SPEAKERS • SOUND TRANSDUCERS • ENCLOSURES • MICROPHONES • BATTERY ACCESSORIES

CT12P-25S200-2

Former P/N: CEPT122S048-125-20MR

Rev. 2-2019
RoHS3 & REACH
Piezoelectric Sound Transducers



Operating Characteristics

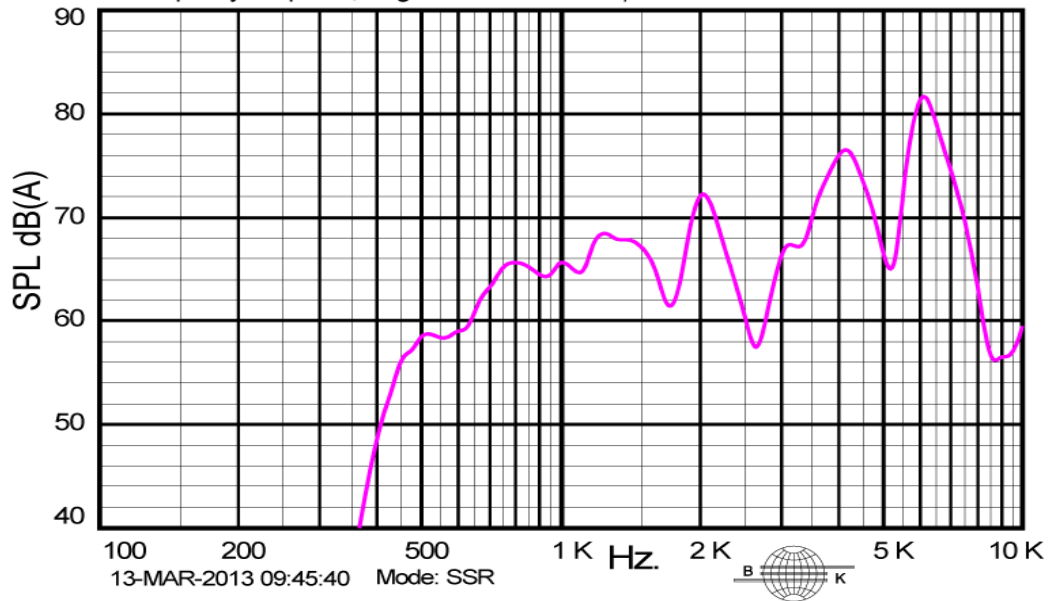
ELECTRICAL

Rated Voltage	3 Vp-p
Max Operating Voltage	25 Vp-p
Max Current at V Rated	1 mA
Capacitance	15000 pF ± 30 % 120 Hz

ACOUSTIC

Min SPL at V Rated	70 dB
Test Conditions	10 cm
f _o	2000 ± 500 Hz

X: 1.700 K Hz *Y: 55.38 dB ZA: Live Curve SSR T.Ha.
A: Frequency Response, Magn dB Ref 20.00 μ Pa/V



Physical Characteristics

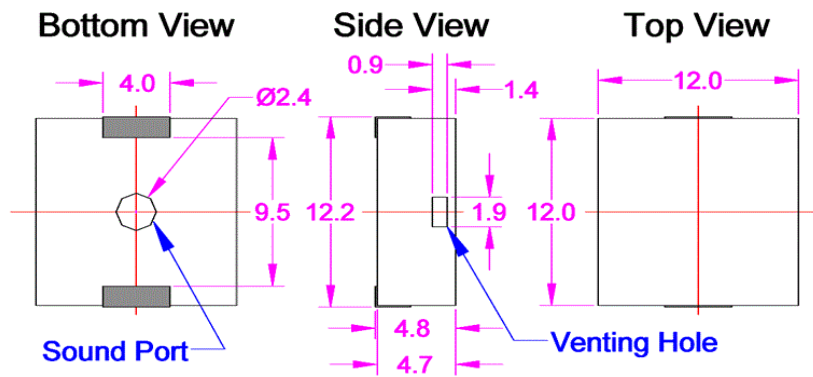
MATERIALS

Housing	Plastic, LCP, Black
Diaphragm	Ni Alloy
Solder Pad	DSn (Brass)

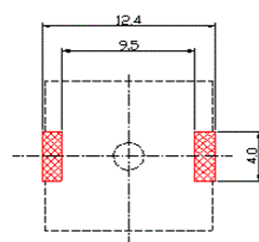
TEMPERATURE RANGES

Operating	-30 to +70 °C
Storage	-40 to +85 °C

Weight	0.4 g
--------	-------



RECOMMENDED LAND PATTERN



Revision	Description	By	Date
1-2013	Updated Tape & Reel Information, Packaging, and PCB Layout drawings	EZ	2013-10-10
2-2019	Migrate to new format	JL	2019-06-21

Warranty: For a period of one (1) year from date of shipping under normal operations conditions This warranty does not apply to products damaged through misuse, abuse, improper installation, alteration, rework, or attempt to repair.

The information contained herein is believed to be correct, but no guarantee or warranty, express or implied, with respect to accuracy, completeness or results is extended and no liability is assumed. Challenge Electronics reserves the right to make changes in any specification, data or material contained herein.

©2020 Challenge Electronics, Inc. Pub. 20200224150518