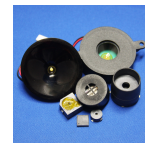


CT15Z-30N600-4

Rev. 0-2025
RoHS3 & REACH
Piezo Element Sound Transducers


Operating Characteristics

ELECTRICAL

Max Operating Voltage	30 Vp-p
Max Resonant Impedance	2,000 Ω
Capacitance	14,000 pF \pm 30% 100 Hz

ACOUSTIC: Free Air

f_o	6,000 Hz
-------	----------

Physical Characteristics

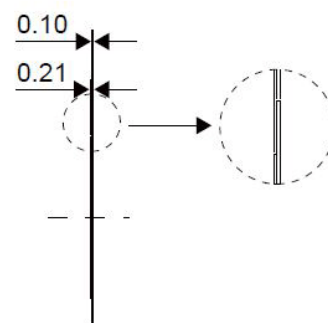
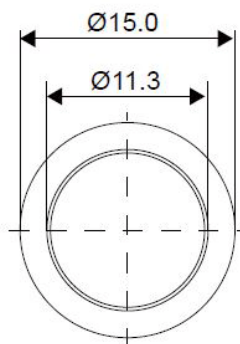
MATERIAL

Diaphragm	Brass
-----------	-------

TEMPERATURE RANGES

Operating	-20 to +60 $^{\circ}$ C
Storage	-20 to +70 $^{\circ}$ C

Weight	0.4 g
--------	-------


General tolerance = \pm 0.5 mm and all measurements in mm unless otherwise noted.

Revision	Description	By	Date
0-2025	Original Specification	KG	2025-06-19

Warranty: For a period of one (1) year from date of shipping under normal operations conditions. This warranty does not apply to products damaged through misuse, abuse, improper installation, alteration, rework, or attempt to repair.

The information contained herein is believed to be correct, but no guarantee or warranty, express or implied, with respect to accuracy, completeness or results is extended and no liability is assumed. Challenge Electronics reserves the right to make changes in any specification, data or material contained herein.