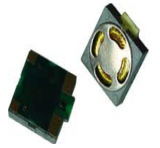


INDICATORS • SPEAKERS • SOUND TRANSDUCERS • ENCLOSURES • MICROPHONES • BATTERY ACCESSORIES

## CS16-00S95-04-1

Former P/N: CSMS15S4.3-8S0.3-P950F

Rev. 2-2019  
RoHS3 & REACH  
Speakers



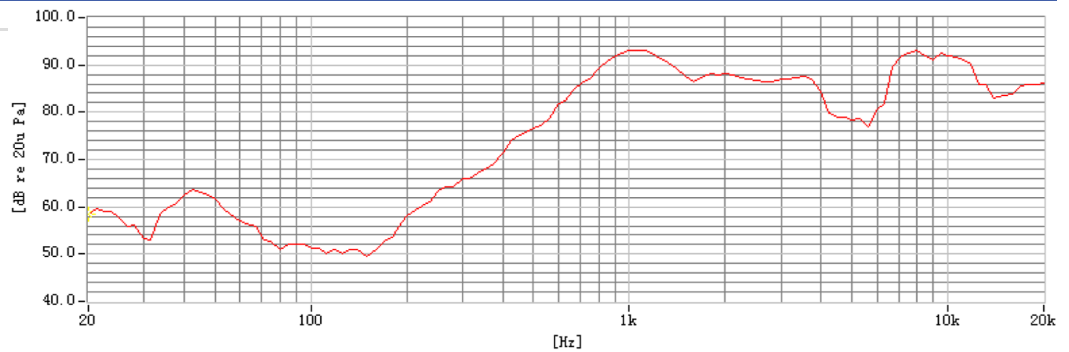
### Operating Characteristics

#### ELECTRICAL

Rated Power	0.3 W
Short Term Max Power	0.5 W
Impedance	8 Ω ± 15 % 1000 Hz; 0.125 W

#### ACOUSTIC: Baffle Board

$f_0$	950 ± 190 Hz 0.3 W
Freq. Range	950 to 20000 Hz
Rated SPL	89 ± 3 dB 800, 1000, 1200, 1500 Hz; 0.3 W; 10 cm;
Distortion	<15 % 2000 Hz; 0.3 W



### Physical Characteristics

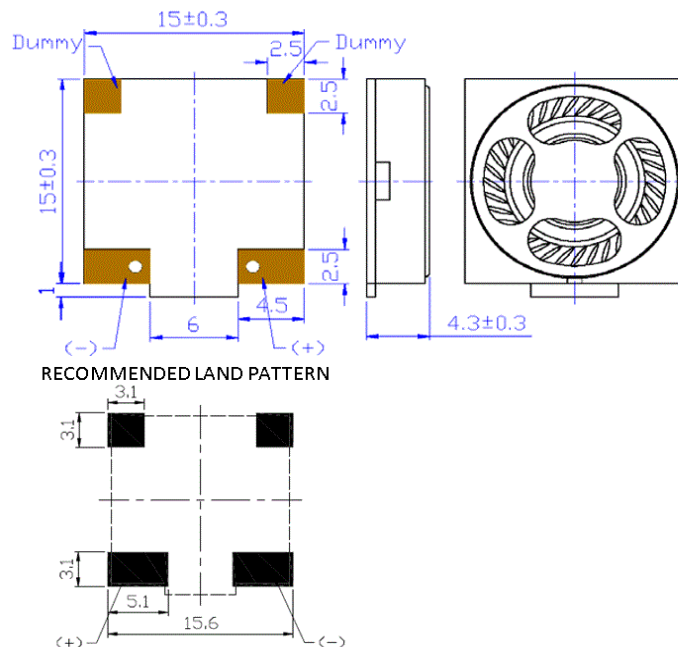
#### MATERIALS

Housing	Plastic
Cone	Mylar
Magnet	NdFeB
Solder Pad	Copper, Gold Plated

#### TEMPERATURE RANGES

Operating	-30 to +80 °C
Storage	-40 to +90 °C

Weight 2.3 g



Revision	Description	By	Date
2-2019	Migrate to new format	WS	2019-06-21

Warranty: For a period of one (1) year from date of shipping under normal operations conditions This warranty does not apply to products damaged through misuse, abuse, improper installation, alteration, rework, or attempt to repair.