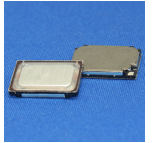


## CS17-01P87-02-1

Rev. 2-2023  
 RoHS3 & REACH  
 IPX7 Front Face Capable\*  
 Mobile Speakers



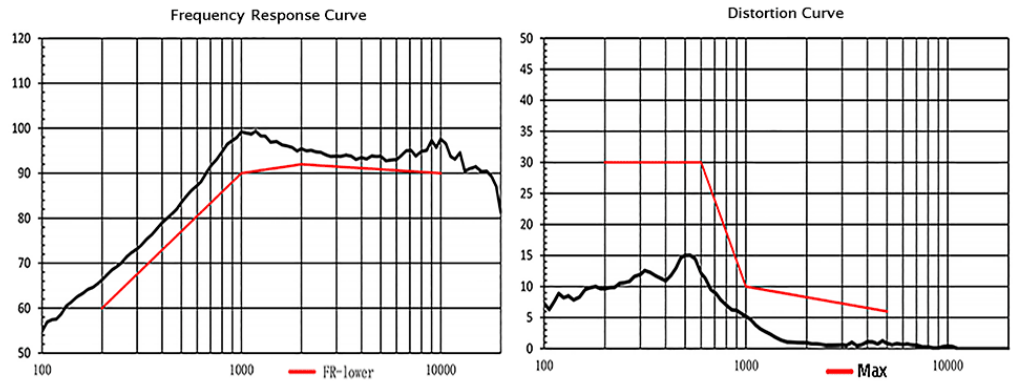
### Operating Characteristics: 0.75cc Sealed Enclosure

#### ELECTRICAL

Rated Power	1 W
Short Term Max Power	1.5 W
Impedance	8 Ω ± 20 % 2000 Hz; 1 W

#### ACOUSTIC

$f_o$	870 Hz ± 20 % 1 W
Freq. Range	870 to 20000 Hz
Rated SPL	95 ± 3 dB 2000 Hz; AVG; 1 W; 10 cm;
Distortion	See Chart % Hz;



### Physical Characteristics

#### MATERIALS

Housing	Plastic
Cone	TPEE
Magnet	NdFeB
Solder Pads	Tin Plated Stainless Steel

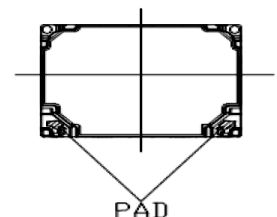
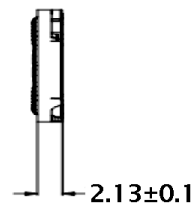
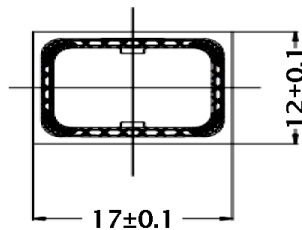
#### TEMPERATURE RANGES

Operating	-20 to +60 °C
Storage	-40 to +85 °C

Weight 2 g



Unless otherwise specified, Tolerance: ±0.15mm



All measurements in mm unless otherwise noted.

Revision	Description	By	Date
1-2022	Added IPX7 Front Face Capable callout.	CT	2022-02-16
2-2023	Added part image.	SK	2023-05-10

Warranty: For a period of one (1) year from date of shipping under normal operations conditions. This warranty does not apply to products damaged through misuse, abuse, improper installation, alteration, rework, or attempt to repair.

The information contained herein is believed to be correct, but no guarantee or warranty, express or implied, with respect to accuracy, completeness or results is extended and no liability is assumed. Challenge Electronics reserves the right to make changes in any specification, data or material contained herein.

\*IP rating can be achieved through proper assembly mounting. Please contact your local Challenge Electronics sales representative for more details.

©2023 Challenge Electronics, Inc. Pub. 20230510144413