

## CS28-03P35-07-1

Rev. 0-2019  
RoHS3 & REACH  
Round Speakers



### Operating Characteristics

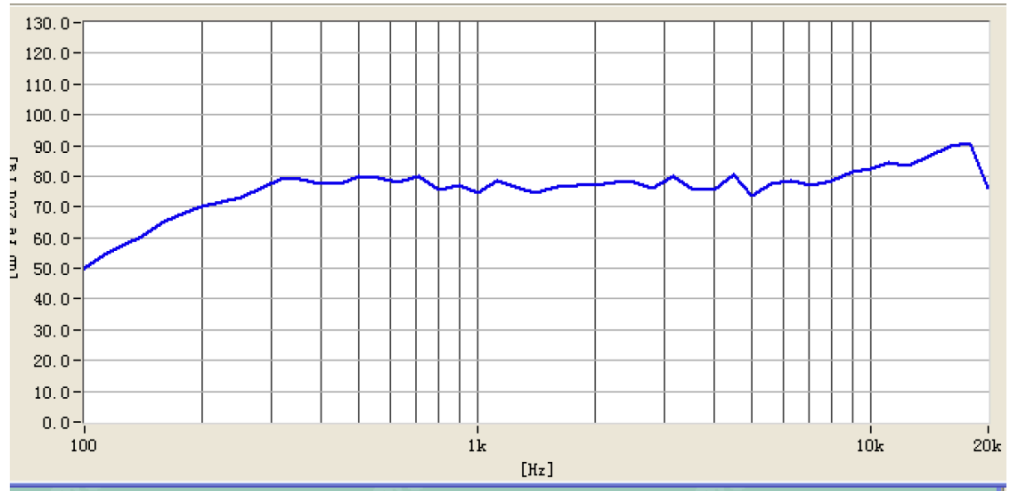
**ELECTRICAL**

Test condition: 3.0W/1.0M,

Rated Power	3.0 W
Short Term Max Power	4.0 W
Impedance	4 Ω ± 15 % 2000 Hz; 3 W

**ACOUSTIC: Baffle Board**

$f_0$	350 Hz ± 20 % 0.25 W
Freq. Range	350 to 20000 Hz
Rated SPL	76.5 ± 3 dB 800, 1000, 1200, 1500 Hz; 3.0 W; 100 cm;
Distortion	<5 % 1000 Hz; 0.1 W



### Physical Characteristics

**MATERIALS**

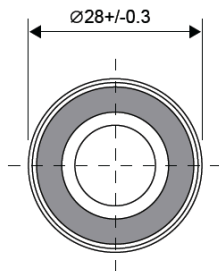
Housing	ABS
Cone	Paper Cone with Foam Edge
Magnet	NdFeB
Solder Pad	Tin Plated Copper

**TEMPERATURE RANGES**

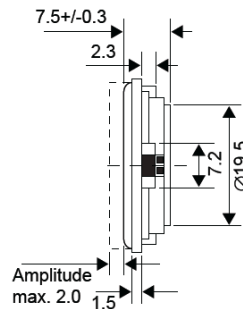
Operating	-20 to +60 °C
Storage	-30 to +70 °C

Weight 7.5 g

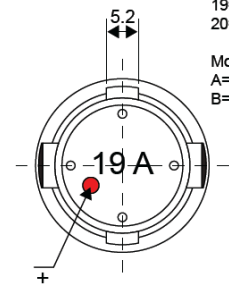
TOP VIEW



SIDE VIEW



BOTTOM VIEW



Year:  
19=2019  
20=2020  
Month:  
A=Jan  
B=Feb

All dimensions are in mm

Revision	Description	By	Date
0-2019	Initial Specification Sheet	CF	2019-08-14

Warranty: For a period of one (1) year from date of shipping under normal operations conditions This warranty does not apply to products damaged through misuse, abuse, improper installation, alteration, rework, or attempt to repair.