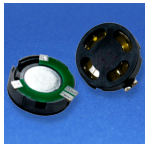


INDICATORS • SPEAKERS • SOUND TRANSDUCERS • ENCLOSURES • MICROPHONES • BATTERY ACCESSORIES

CS30-00S70-08-1

Former P/N: CES290R080BA08PMN700MR

Rev. 3-2019
 RoHS3 & REACH
 Round Speakers



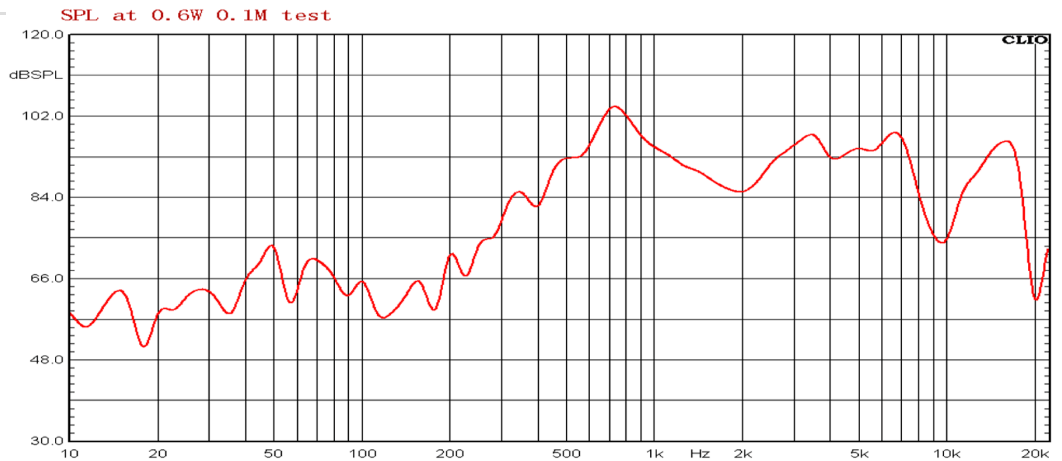
Operating Characteristics

ELECTRICAL

Rated Power	0.6 W
Short Term Max Power	1.0 W
Impedance	8 Ω ± 15 % 10000-20000 Hz; 0.5995 W

ACOUSTIC: Baffle Board

f_0	700 Hz ± 20 % 0.1 W
Freq. Range	700 to 20000 Hz
Rated SPL	97 ± 3 dB 800, 1000, 1200, 1500 Hz; 0.6 W; 10 cm;
Distortion	<5 % 1000 Hz; 0.6 W



Physical Characteristics

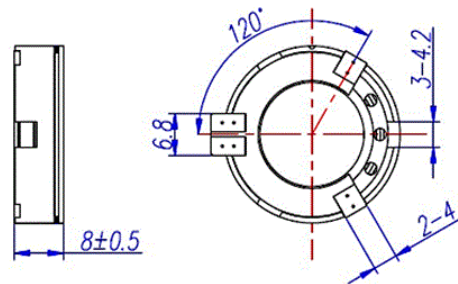
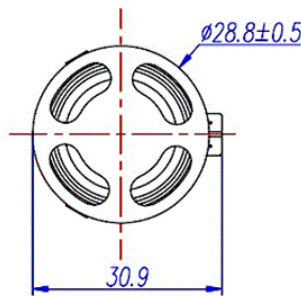
MATERIALS

Housing	Plastic LCP Vectra E130i
Cone	PI
Magnet	SmCo
Solder Pad	Copper, Tin Plated

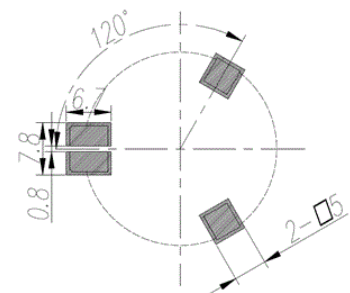
TEMPERATURE RANGES

Operating	-40 to +85 °C
Storage	-40 to +90 °C

Weight 9 g



RECOMMENDED LAND PATTERN



Revision	Description	By	Date
2-2019	Corrected diaphragm material from PI Mylar to PI. Added Resonant Frequency test conditions.	JL	2019-03-07
3-2019	Migrate to new format.	CF	2019-06-24

Warranty: For a period of one (1) year from date of shipping under normal operations conditions This warranty does not apply to products damaged through misuse, abuse, improper installation, alteration, rework, or attempt to repair.

The information contained herein is believed to be correct, but no guarantee or warranty, express or implied, with respect to accuracy, completeness or results is extended and no liability is assumed. Challenge Electronics reserves the right to make changes in any specification, data or material contained herein.