

CS36-05D20-18-1

Rev. 0-2019
RoHS3 & REACH
Round Speakers



Operating Characteristics

ELECTRICAL

Test condition: 1.0W/0.5M,

Rated Power	5.0 W
Short Term Max Power	5.5 W
Impedance	4 Ω ± 15 % 2000 Hz; 5 W

ACOUSTIC: Baffle Board

f_0	200 Hz ± 20 % 0.25 W
Freq. Range	200 to 10000 Hz
Rated SPL	85 ± 3 dB 800, 1000, 1200, 1500 Hz; 1 W; 50 cm;
Distortion	<5 % 1000 Hz; 1 W



Physical Characteristics

MATERIALS

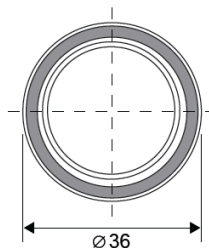
Housing	Plastic
Cone	PET with PU Edge
Magnet	NdFeB
Solder Tab	Tin Plated Copper

TEMPERATURE RANGES

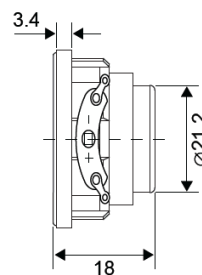
Operating	-20 to +50 °C
Storage	-30 to +60 °C

Weight 20.2 g

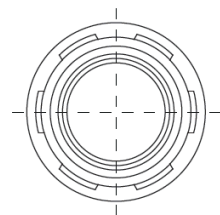
TOP VIEW



SIDE VIEW



BOTTOM VIEW



All dimensions are in mm

Revision	Description	By	Date
0-2019	Initial Specification Sheet	CF	2019-08-14

Warranty: For a period of one (1) year from date of shipping under normal operations conditions This warranty does not apply to products damaged through misuse, abuse, improper installation, alteration, rework, or attempt to repair.