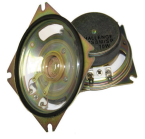


INDICATORS • SPEAKERS • SOUND TRANSDUCERS • ENCLOSURES • MICROPHONES • BATTERY ACCESSORIES

CS86-05D50-35-1

Former P/N: F87S8MSP

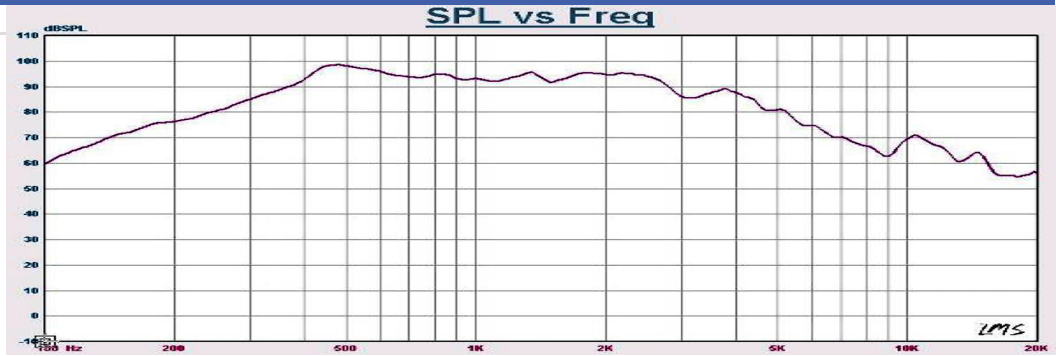
Rev. 3-2019
RoHS3 & REACH
Square Speakers



Operating Characteristics

ELECTRICAL	
Rated Power	5.0 W
Short Term Max Power	10.0 W
Impedance	8 Ω ± 15 % 700 Hz; 0.125 W

ACOUSTIC: Baffle Board	
f_0	500 Hz ± 20 % 0.125 W
Freq. Range	500 to 4000 Hz
Rated SPL	87 ± 3 dB 700, 800, 900, 1000 Hz; 1.0 W; 100 cm;
Distortion	<5 % 1000 Hz; 1 W

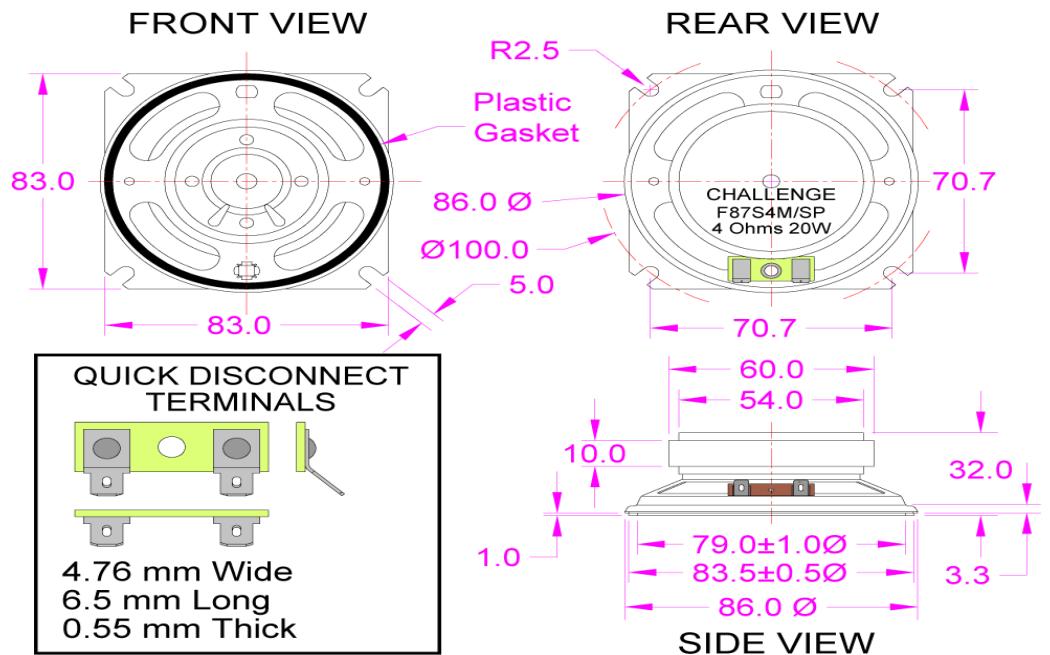


Physical Characteristics

MATERIALS	
Housing	Steel
Cone	Mylar
Magnet	Ferrite

TEMPERATURE RANGES	
Operating	-25 to +65 °C
Storage	-30 to +70 °C

Weight	270 g
--------	-------



Revision	Description	By	Date
3-2019	Migrate to new format	JL	2019-06-21

Warranty: For a period of one (1) year from date of shipping under normal operations conditions This warranty does not apply to products damaged through misuse, abuse, improper installation, alteration, rework, or attempt to repair.